

INNOVATION LEADS TO VALUE



SWE600F LARGE-EXCAVATOR

◆ Total weight:56.2~56.8t

◆ Engine power:348kW/1800rpm

◆ Bucket capacity:3.2~3.6m³



◆ Higher configuration

The high-power engine is equipped with large displacement main pump, suitable for operation under heavy load in mines.

◆ Better maintenance

Humanized maintenance channel, centralized arrangement of maintenance parts, optional centralized lubrication, and more convenient maintenance.

◆ Better adaptability

Independent heat dissipation of hydraulic oil, multi-stage fuel filtration system and super engine power, suitable for plateau and cold environment and harsh working conditions in mines.

◆ Higher reliability

Super verified hydraulic power components, mine type heavy sprocket, track roller, carrier roller, idler, and track, five structural parts 20,000 h reliability design and better durability.

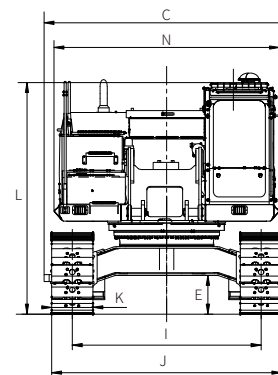
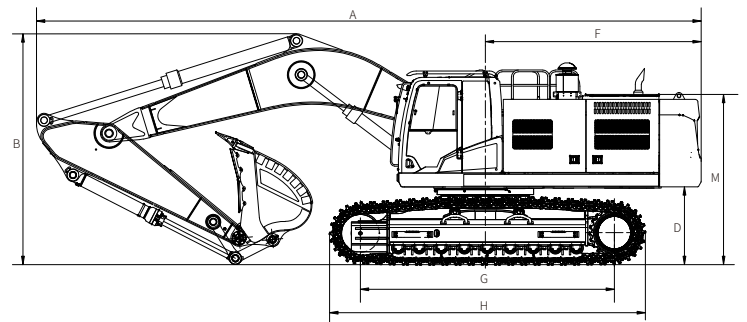
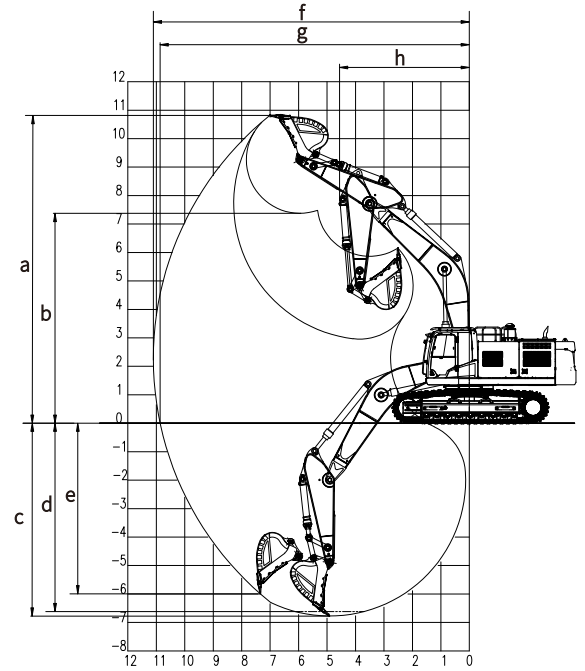


Parameters and performance of the main machine

Weight of whole machine	t	56.2-56.8	
Standard bucket capacity	m ³	3.2-3.6	
Digging force of bucket	kN	297	
Digging force of arm	kN	261	
Max. traction	kN	\	
Traveling speed(Max/Min)	km/h	5.4/3.3	
Gradeability	°	35	
Ground pressure	kPa	87.8	
Slewing speed	rpm	9.9	
Engine	Brand	CUMMINS	
	Model	GB4-6WG1	
	Type	High-pressure common rail	
	Displacement	L	15.681
	Power/rpm	kw/rpm	348/1800
Fuel tank capacity	L	850	
Primary pump	Type	2 x piston variable pump	
	Flow rate	L/min	2×391
Pressure of main relief valve	MPa	\	
Hydraulic oil tank capacity	L	520	

Working range

Boom length	mm	6400
Arm length	mm	2900
a Max. digging height	mm	10540
b Max. dumping height	mm	7190
c Max. digging depth	mm	6780
d Digging depth (2.44m: horizontal)	mm	\
e Max. vertical digging depth	mm	5010
f Max. digging radius	mm	11040
g Max. digging reach at ground level	mm	10800
h Min. front slewing radius	mm	4560



Outline dimension

A	Total length	mm	11540	H	Total track length	mm	5480
B	Total height	mm	4080	I	Track distance	mm	2740
C	Total width	mm	3560	J	Track width	mm	3340
D	Ground clearance of platform	mm	1350	K	Width of track link	mm	600
E	Chassis ground clearance	mm	560	L	Cab roof height	mm	3360
F	Platform tail slewing radius	mm	3750	N	Upper-structure width	mm	3270
G	Wheel tread	mm	4410				

★ The above parameters may be different due to product upgrading.

